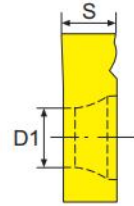
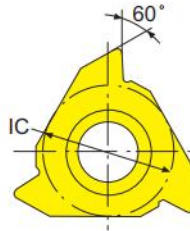
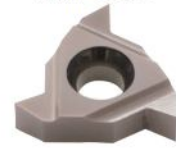


## ER / IR

- 標準庫存      \* 僅限中國地區銷售      ◎僅限台灣地區銷售
- Standard Stocks      \* Sell in China only      ◎Sell in Taiwan only
- 另有其他規格，歡迎來電洽詢！
- We could provide inserts for other specifications, please contact us!
- ◆材質介紹→參考A04頁      ◆斷削槽選擇→參考A06-A08頁
- Grade Ref. Page-A04      Chipbreaker Ref. Page-A06-A08
- ◆切削條件→參考A09頁
- Cutting condition Ref. Page-A09



形狀 Shape

塗層硬質合金  
Carbide Coated

型號 Model No	螺距(公制) Pitch(mm)	螺距(英制) Pitch(inch)	內接圓 IC	刀片厚度 S	螺釘孔徑 D1	塗層硬質合金 Carbide Coated	
						P	M
						EC400	BEJ758
06IR-0.5-ISO	0.5	—	4	1.85	2.32	●	
06IR-0.75-ISO	0.75	—	4	1.85	2.32	●	
06IR-1.0-ISO	1	—	4	1.85	2.32	●	
06IR-27-NPT	—	27	4	1.85	2.32	●	
06IR-19W	—	19	4	1.85	2.32	●	
06IR-28W	—	28	4	1.85	2.32	●	
06IR-A55	0.5-1.5	—	4	1.85	2.32	●	
06IR-A60	0.5-1.5	—	4	1.85	2.32	●	
08IR-0.5-ISO	0.5	—	5	2.24	2.57	●	
08IR-1.0-ISO	1	—	5	2.24	2.57	●	
08IR-0.75-ISO	0.75	—	5	2.24	2.57	●	
08IR-A60	0.5-1.5	—	5	2.24	2.57	●	
11ER/IR-0.5-ISO	0.5	—	6.35	3.05	2.8	●	
11IR-0.75-ISO	0.75	—	6.35	3.05	2.8	●	●
11ER/IR-1.0-ISO	1	—	6.35	3.05	2.8	●	●
11ER/IR-1.25-ISO	1.25	—	6.35	3.05	2.8	●	●
11ER/IR-1.5-ISO	1.5	—	6.35	3.05	2.8	●	●
11IR-1.75-ISO	1.75	—	6.35	3.05	2.8	●	●
11IR-2.0-ISO	2	—	6.35	3.05	2.8	●	
11IR-14-BSPT	—	14	6.35	3.05	2.8	●	
11IR-14-NPT	—	14	6.35	3.05	2.8	●	
11IR-14-UN	—	14	6.35	3.05	2.8	●	
11IR-16-UN	—	16	6.35	3.05	2.8	●	●
11ER/IR-18-UN	—	18	6.35	3.05	2.8	●	
11ER/IR-14W	—	14	6.35	3.05	2.8	●	
11ER/IR-19W	—	19	6.35	3.05	2.8	●	
11ER-28W	—	28	6.35	3.05	2.8	●	
11ER/IR-A55	0.5-1.5	—	6.35	3.05	2.8	●	
11ER/IR-A60	0.5-1.5	—	6.35	3.05	2.8	●	●

※ 請接下頁。 ※ Continued on next page.

# ER / IR

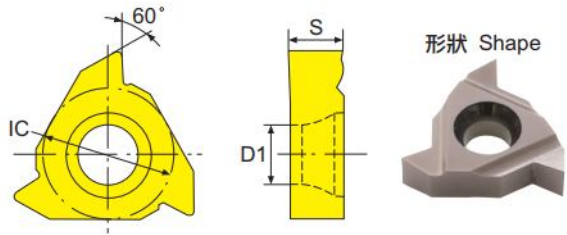
 塗層硬質合金  
Carbide Coated

型號 Model No	螺距(公制) Pitch(mm)	螺距(英制) Pitch(inch)	內接圓 IC	刀片厚度 S	螺釘孔徑 D1	P M	
						EC400	BEJ758
						16ER/IR-0.35-ISO	0.35
16ER/IR-0.4-ISO	0.4	—	9.525	3.52	4.4	●	
16IR-0.45-ISO	0.45	—	9.525	3.52	4.4	●	
16ER/IR-0.5-ISO	0.5	—	9.525	3.52	4.4	●	
16ER-0.6-ISO	0.6	—	9.525	3.52	4.4	●	
16ER/IR-0.7-ISO	0.7	—	9.525	3.52	4.4	●	
16ER/IR-0.75-ISO	0.75	—	9.525	3.52	4.4	●	
16ER/IR-0.8-ISO	0.8	—	9.525	3.52	4.4	●	
16ER/IR-1.0-ISO	1	—	9.525	3.52	4.4	●	
16ER/IR-1.25-ISO	1.25	—	9.525	3.52	4.4	●	
16ER/IR-1.5-ISO	1.5	—	9.525	3.52	4.4	●	
16ER/IR-1.75-ISO	1.75	—	9.525	3.52	4.4	●	
16ER/IR-2.0-ISO	2	—	9.525	3.52	4.4	●	
16ER/IR-2.5-ISO	2.5	—	9.525	3.52	4.4	●	●
16ER/IR-3.0-ISO	3	—	9.525	3.52	4.4	●	●
16IR-8-ACME	—	8	9.525	3.52	4.4	●	●
16ER-12-ACME	—	12	9.525	3.52	4.4	●	●
16ER/IR-11-BSPT	—	11	9.525	3.52	4.4	●	●
16ER/IR-14-BSPT	—	14	9.525	3.52	4.4	●	
16ER/IR-19-BSPT	—	19	9.525	3.52	4.4	●	
16ER-28-BSPT	—	28	9.525	3.52	4.4	●	
16IR-8-NPT	—	8	9.525	3.52	4.4	●	
16ER/IR-11.5-NPT	—	11.5	9.525	3.52	4.4	●	●
16ER/IR-14-NPT	—	14	9.525	3.52	4.4	●	
16ER/IR-14-NPT-(0.2R)	—	14	9.525	3.52	4.4	●	
16ER/IR-18-NPT	—	18	9.525	3.52	4.4	●	
16ER/IR-8-UN	—	8	9.525	3.52	4.4	●	
16ER-10-UN	—	10	9.525	3.52	4.4	●	
16IR-11-UN	—	11	9.525	3.52	4.4	●	●
16ER/IR-14-UN	—	14	9.525	3.52	4.4	●	
16ER/IR-16-UN	—	16	9.525	3.52	4.4	●	
16ER/IR-18-UN	—	18	9.525	3.52	4.4	●	
16ER/IR-20-UN	—	20	9.525	3.52	4.4	●	

※ 請接下頁。 ※ Continued on next page.

## ER / IR

- 標準庫存      \* 僅限中國地區銷售      ◎僅限台灣地區銷售
- Standard Stocks      \* Sell in China only      ◎Sell in Taiwan only
- 另有其他規格，歡迎來電洽詢！
- We could provide inserts for other specifications, please contact us!
- ◆材質介紹→參考A04頁  
Grade Ref. Page-A04
- ◆斷削槽選擇→參考A06-A08頁  
Chipbreaker Ref. Page-A06-A08
- ◆切削條件→參考A09頁  
Cutting condition Ref. Page-A09


 塗層硬質合金  
Carbide Coated

型號 Model No	螺距(公制) Pitch(mm)	螺距(英制) Pitch(inch)	內接圓 IC	刀片厚度 S	螺釘孔徑 D1	P M	
						EC400	BEJ758
16ER/IR-24-UN	—	24	9.525	3.52	4.4	●	
16ER-28-UN	—	28	9.525	3.52	4.4	●	
16ER/IR-12-UN	—	12	9.525	3.52	4.4	●	
16ER/IR-14-UN	—	14	9.525	3.52	4.4	●	
16ER/IR-16-UN	—	16	9.525	3.52	4.4	●	
16ER/IR-8W	—	8	9.525	3.52	4.4	●	
16ER-10W	—	10	9.525	3.52	4.4	●	
16ER/IR-11W	—	11	9.525	3.52	4.4	●	
16ER/IR-12W	—	12	9.525	3.52	4.4		
16ER/IR-14W	—	14	9.525	3.52	4.4	●	
16ER/IR-16W	—	16	9.525	3.52	4.4	●	
16ER/IR-18W	—	18	9.525	3.52	4.4	●	
16ER/IR-19W	—	19	9.525	3.52	4.4	●	●
16ER/IR-A60	0.5-1.5	—	9.525	3.52	4.4	●	●
16ER/IR-A55	0.5-1.5	—	9.525	3.52	4.4	●	●
16ER/IR-AG55	0.5-3	—	9.525	3.52	4.4	●	●
16ER/IR-AG60	0.5-3	—	9.525	3.52	4.4	●	●
16ER/IR-G55	1.75-3	—	9.525	3.52	4.4	●	●
16ER/IR-G60	1.75-3	—	9.525	3.52	4.4	●	
22ER-3.5-ISO	3.5	—	12.7	4.65	5.5	●	●
22ER/IR-4.0-TR	—	4	12.7	4.65	5.5	●	●
22ER-4.5-ISO	4.5	—	12.7	4.65	5.5	●	●
22IR-5.0-ISO	5	—	12.7	4.65	5.5	●	●
22IR-7-UN	—	7	12.7	4.65	5.5	●	●
22ER/IR-N55	3.5-5	—	12.7	4.65	5.5	●	●
22ER/IR-N60	3.5-5	—	12.7	4.65	5.5	●	●